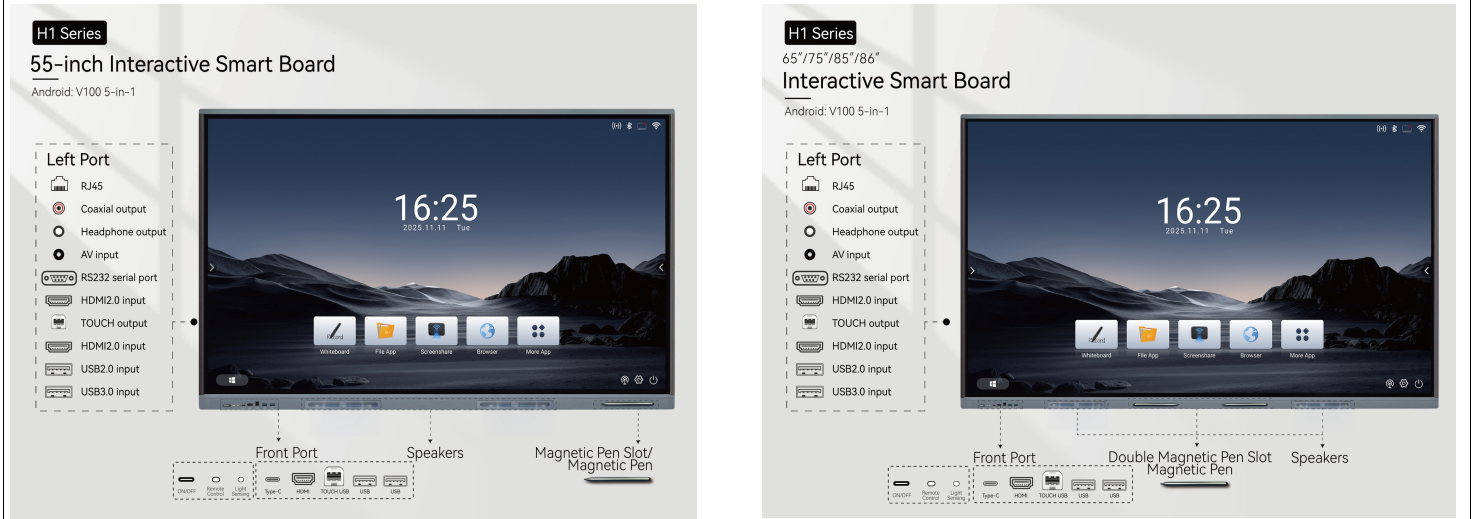


H1 SERIES PRODUCT SPECIFICATION - V100 5-IN-1

Product Appearance and Port Overview



Product Features

Structure	Full Aluminum Profile + Full Tempered Glass + Zinc Alloy Corner Connectors + Molded Sheet Metal + Internal Structural Components + Plug-in Modules + Wall Mount Bracket (Mobile Stand/Pedestrian Stand Optional)
Color	Profile: Anodized, Top & Bottom in Space Gray + Left & Right in Matte Black Corner Connectors: Gun Gray Zinc Alloy Electroplated Rear Cover: Black Sheet Metal with Spray Coating
Backlight	D-LED Type: Color Gamut: 85% NTSC (Typical Value), Backlight Uniformity 80%
Display Parameters	Brightness: Center Point ≥ 350 cd/m ² Resolution: 4K (3840*2160P)
Front Frame Glass	Tempered Glass: ≥ 3 mm Thickness, Clear Glass/Anti-Glare Option, Mohs Hardness 7H
Audio	Front Surround Dual Speakers: Active Noise Cancellation, Rich Bass & Clear Treble 2*10W/2*15W (Optional)
Systems	Android Windows Android + Windows (One-Click Switch)
Functions	Auto Light Sensing, Remote Conferencing, Wireless Screen Projection, Electronic Whiteboard Writing, Multi-channel Writing, Child Lock, Screenshot & Sharing, Global Annotation, Fast File Transfer, Split-Screen Display

Touch System

Induction Type	Infrared Touch System with 40 Touch Points (Up to 100 Touch Points Supported with OPS)
Response Speed	First Touch Response Time < 6ms, Continuous Touch Response Time < 2ms
Connection Method	Full-Speed Built-in USB (Driver-Free)
Touch Accuracy	± 1 mm
Surface Protection	Anti-Glare Full Tempered Glass: ≥ 3 mm Thickness (Standard), Mohs Hardness 7H

Android System

Operating System	Android 14.0 Version
Chip Solution	GKV V100
CPU	8x A55, Main Frequency 1.2GHz
GPU	Mali-G52 MP2
RAM	4GB/8GB (Optional)
Storage Memory	32GB/128GB (Optional)
Network Connection	Wireless Network Card with RJ45 Port

Windows System (Optional)

Structural Design	Modular Solution, Pull-out Built-in Type: PC Module Can Be Stably Inserted into the Main Unit. Adopting Standard OPS (Open Pluggable Specification) 80pin Interface
Operating System	Windows 7/10/11
CPU	Intel® Core™ i5 (i7 Optional)
RAM	8GB/16GB/32GB
Storage Memory	128G/256G/512G/1TSSD
GPU	Intel® UHD Graphics, Supporting 3840x2160P (4K) Resolution
Software	Whiteboard Software Supporting Editing Modes for WORD, EXCEL, PowerPoint and PDF Presentations, Allowing Annotations and Modifications with Original Trajectories Retained; Supporting Teaching Content Recording

Operating Environment

Operating Temperature	-10~+50℃
Storage Temperature	-20℃~60℃
Operating Humidity	10%RH~90%RH
Storage Humidity	10%RH~90%RH
Standard Accessories	Power Cord, Magnetic Stylus 1, Remote Control, WIFI Antenna, User Manual, Wall Mount
Optional Accessories	Screen Projector, Page Turner, Mobile Stand, HDMI Cable, Touch USB Cable

Product Parameters					
Product Dimensions	55"	65"	75"	85"	86"
Display Size (mm)	1212*682	1431*805	1652*930	1874*1055	1897*1068
Overall Dimensions (mm)	1266*763*85	1486*888*106	1708*1013*106	1954*1153*106	1954*1153*106
Packaging Dimensions (mm)	1370*920*200	1600*1000*200	1850*1155*225	2110*1285*225	2110*1285*225
Mounting Hole Spacing (mm)	400*400	500*400	600*400	800*400	800*400
Thickness with Mount (mm)	108	132	134	140	140
Net Weight of Unit (kg)	22	31	42	54	54
Gross Weight (kg)	30	41	54	74	74
Service Life (h)	≥50,000 h				
Input Voltage (V)	AC190~264~ (50/60Hz)				
Power Consumption (W)	134	150	165	230	230
OPS Power (W)	90				

Application Scenario Renderings



Bracket Installation Diagram



Mobile Stand Installation (Optional)



Pedestrian Stand Installation (Optional)